



SOUTHERN AFRICA SAFARI ADVENTURE

SA4-0128: JANUARY 28 - FEBRUARY 13, 2024

- NEW ITINERARY -





Family Owned and Operated
Since 1983



Worry-Free, Small Group Travel

Local Guides.... At Your Service

All tours are fully guided by locals who understand the history, zoology, and geography in each region that we visit. These individuals are selected for their extensive knowledge of each area that you will experience. All tours will be escorted by a John Hall's Alaska representative as well. Gratuity for your John Hall's Alaska representative is not included with your package and is at your discretion.

Private, Personal Experiences

Whenever possible, we have privately reserved activities and meals as we believe this will create better wildlife encounters and more personalized cultural interactions during your time in Africa.

Luxury Hotels and Wildlife Reserves

John Hall's Alaska has included overnights at boutique properties and wildlife reserve lodges that offer luxurious room amenities and gourmet cuisine. Locations are chosen for the beauty of the location, the proximity to wildlife and outdoor excursions, and the enjoyment of the traveler.

Airport Transfers, Baggage Handling, Taxes, and Gratuities

We will greet you at your arrival airport and take care of your large luggage, delivering it to your room every evening and picking it up from your room upon check out. We include all entrance fees, local guide fees, hotel charges, taxes, and gratuities for activities, meals and baggage handling, so you don't need to reach for your pocket book while on vacation. Transportation will be provided to your departing airport location at the conclusion of your vacation.

Tipping/Gratuities

All gratuities have been included in the price of your package with the exception of your John Hall's Alaska Representative. This includes all waitering staff, local drivers and guides, and luggage handling gratuities while on tour. Tipping your Tour Representative is not required and should reward exemplary service.



SOUTHERN AFRICA SAFARI ADVENTURE



2024 ROUTE MAP



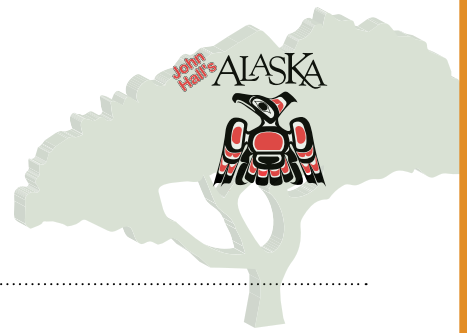
"No words can describe this wonderful experience. Seeing the animals in their natural habitat on many safaris was breathtaking. Each safari held a new experience for us. In addition, we visited Cape Town, Johannesburg, Victoria Falls and many other areas of great interest."

★★★★★ by George

www.KissAlaska.com

John Hall's Alaska 1127 N. Lakeshore Drive, Lake City, MN 55041

SOUTHERN AFRICA SAFARI ADVENTURE



Destinations & Hotel Overnights

SOUTH AFRICA

- 1 Arrive in Cape Town, South Africa *Cape Grace Hotel, Cape Town*
- 2 Cape Town, Robben Island, & Table Mountain *Cape Grace Hotel, Cape Town*
- 3 Shamwari Private Game Reserve *Long Lee Manor at Shamwari Private Game Reserve*
- 4 Shamwari Private Game Reserve *Long Lee Manor at Shamwari Private Game Reserve*
- 5 Shamwari Private Game Reserve *Long Lee Manor at Shamwari Private Game Reserve*
- 6 Shamwari Private Game Reserve *Long Lee Manor at Shamwari Private Game Reserve*
- 7 Oceana Beach & Wildlife Reserve *Oceana Beach & Wildlife Reserve, Port Alfred*
- 8 Oceana Beach & Wildlife Reserve *Oceana Beach & Wildlife Reserve, Port Alfred*
- 9 Oceana Beach & Wildlife Reserve *Oceana Beach & Wildlife Reserve, Port Alfred*
- 10 Johannesburg *InterContinental, Johannesburg*

ZIMBABWE

- 11 Victoria Falls & Zambezi River *Victoria Falls Hotel, Victoria Falls*
- 12 Victoria Falls & Bushtracks Train *Victoria Falls Hotel, Victoria Falls*

BOTSWANA & NAMIBIA

- 13 Chobe River Front Cruising *Zambezi Queen by Mantis, Chobe River Cruising*
- 14 Chobe River Front Cruising *Zambezi Queen by Mantis, Chobe River Cruising*
- 15 Chobe River Front Cruising *Zambezi Queen by Mantis, Chobe River Cruising*

SOUTH AFRICA

- 16 Johannesburg *InterContinental, Johannesburg*
- 17 Fly Home from Johannesburg, South Africa

2024 Departures & Pricing

TOUR DATE
SA4-0128 JANUARY 28 - FEBRUARY 13, 2024

DOUBLE
OCCUPANCY
\$19,499

SINGLE
OCCUPANCY
\$26,999

Group Size: 20 passenger maximum

Per Person Pricing Includes All:

Attractions & corresponding gratuities, accommodations, fully guided service, 47 meals & corresponding gratuities, taxes, baggage handling & corresponding gratuities, airport meet and greet, transportation (by coach, plane and cruise boat), and a special World Adventure keepsake.

Flights:

Arrival and departure airfare to and from Africa is not included. Flights are included that are part of the touring itinerary. We recommend arriving one day early and to prepare for two days of travel. Please plan to arrive Cape Town, South Africa at any time on day 1 or before, and fly home at any time of day on day 17 from Johannesburg, South Africa. John Hall's Alaska has also guaranteed late check out for anyone with a late departure.

Check Discount:

Enjoy a discount of \$300 per person when tour payment is made by check. \$1,500 per person deposits may still be made by credit card.

47 Meals

Breakfast, lunch and dinner on full tour days + arrival day dinner, departure day breakfast



Daily Itinerary: Days 1-8

1 ARRIVE IN CAPE TOWN

Upon arrival at Cape Town International Airport, you will be met by your John Hall's Alaska representative and will be transferred to your hotel, situated in the heart of the V&A Waterfront. The rest of your day is free for exploring the sights around your hotel. Join your group for a private welcome dinner at your hotel, Cape Grace, this evening. *Dinner*

2 CAPE TOWN, ROBBEN ISLAND, & TABLE MOUNTAIN

Enjoy breakfast at the hotel this morning, before heading out on today's adventure. Visit Robben Island for an exclusive, private tour with Christo Brand - who was the prison guard for Nelson Mandela during his sentence.. Later, enjoy breathtaking views from the top of Table Mountain followed by dinner at the award-winning, GOLD Restaurant for live music and an authentic African menu.

All Meals

3 SHAMWARI PRIVATE GAME RESERVE

This morning guests will have breakfast at the hotel before departing for the airport for a 2 hour flight to Port Elizabeth. On arrival, guests will be transferred to John Hall's Alaska's private, Long Lee Manor at Shamwari Private Game Reserve. Enjoy several days filled with game drives, birding, safaris, relaxation and delicious cuisine. *All Meals*

4-6 SHAMWARI PRIVATE GAME RESERVE

There is so much to do and before you head out, you will be briefed on all of the adventures available to you! Game viewing drives are available for morning and afternoon trips, as this is when the animals are most active. Survey the areas, witness the birds of prey or spot one of the "big five" from the comfort and safety of open game viewing vehicles. Professional rangers and guides are there to share their passion for wildlife and their knowledge in their respective fields of expertise. Visit the Big Cat Rescue and Education Centres situated within the game reserve. They aim to draw attention to the plight of wild cats, confined in impoverished, captive environments throughout the world. Another wonderful place to visit on the reserve is the Shamwari Wildlife Rehabilitation Centre, which helps to rescue, rehabilitate and care for sick, injured, abandoned or orphaned animals. This area of the Eastern Cape is also home to a host of beautiful birds, from tiny feathered friends to majestic birds of prey. Ornithologists and bird watchers are sure to be treated with an array of bird life. Expect to take away new insights, an appreciation for Africa, and unforgettable experiences!

All Meals

7 OCEANA BEACH & WILDLIFE RESERVE

Today depart by road from Shamwari bound for the magnificent coastal Oceana Beach & Wildlife Reserve. Set in a spectacular and unique environment, Oceana offers a luxurious boutique hotel experience in a wildlife reserve overlooking the Indian Ocean. Guests will arrive at Oceana for lunch at the main lodge with a sea view. The afternoon brings a game drive followed by a 5-course fine dining experience.

All Meals

8 OCEANA BEACH & WILDLIFE RESERVE - ADVENTURE DAY

Following a lovely breakfast, take an early morning guided bush walk out on the reserve. Afterwards, choose to participate on one of the following activities for the day: a round of golf, horse riding along the beach, or a deep-sea fishing charter. Lunch will be served at your leisure. Before dinner, enjoy a whiskey tasting at the reserve and then gather for another 5-course fine dining experience.

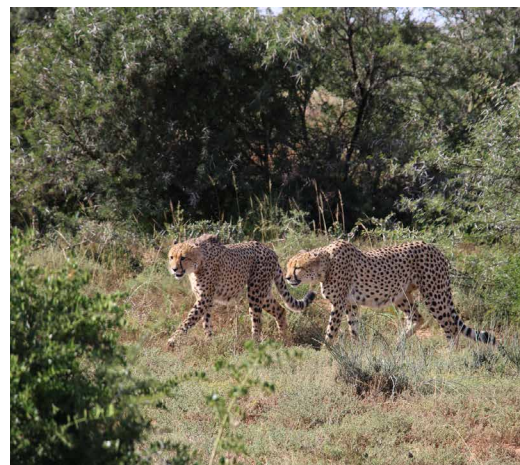
All Meals



Highlights Days 1-8

Private Robben Island Tour
GOLD Restaurant
Table Mountain
Shamwari Private Game Reserve
Africa's Big Five Wildlife Game Drive
Private Whiskey Tasting

Big Five Safaris
Born Free Big Cat Rescue
Shamwari Wildlife Rehabilitation Centre
Oceana Beach & Wildlife Reserve
Adventure Day Activities
Oceana Beach Game Drive



SOUTHERN AFRICA SAFARI ADVENTURE



Daily Itinerary: Days 9-12

9 OCEANA BEACH & WILDLIFE RESERVE - RELAXATION DAY

Slow it down today with a full day of freedom to enjoy the luxurious amenities provided by the lodge. Be as active or as still as you like with options of game drives, beach activities, a day at the pool or spa treatments. *All Meals*

10 JOHANNESBURG

Breakfast will be served at the main lodge before departure back to Port Elizabeth. Here you will board a 1.5 hour group flight to Johannesburg - one of Africa's largest and most vibrant cities. It is the economic capital of Africa and the gateway to Southern Africa. This bustling city offers a wide range of activities, attractions and plenty to do. Upon arrival, check into your hotel, The InterContinental. Dinner will be at your hotel this evening. *All Meals*

11 VICTORIA FALLS & THE ZAMBEZI RIVER

This morning board a 1.5 hour group flight to Victoria Falls - home to one of the largest waterfalls in the world. Upon arrival you will be transferred a short distance to the Victoria Falls Hotel, an essay in understated elegance. This afternoon join the five-star cruise vessel, The Zambezi Grande, for a luxurious sightseeing trip along the Zambezi River at sunset. The 'Signature Deck' is the uppermost level and it is pure extravagance with gourmet hors d'oeuvres and premium beverages served from a private bar. Guests can relax in comfort on the deep-set couches and enjoy the pleasure of first-class service. Return to your hotel for dinner and a cultural experience at Jungle Junction which offers an unforgettable fusion of African flavors. Entertainment from ethnic groups epitomizes the spirit of Africa while you dine. *All Meals*

12 VICTORIA FALLS & BUSHTRACKS TRAIN

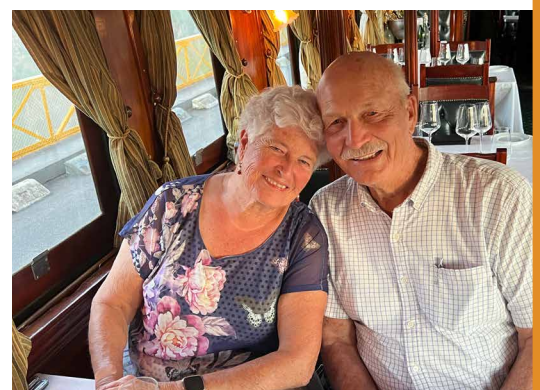
This morning depart on your walking tour of Victoria Falls - a path along the edge of the forest provides the visitor who is prepared to brave the tremendous spray with an unparalleled series of views of the falls. One special vantage point is across the Knife Edge Bridge, where visitors can have the finest view of the Eastern Cataract and the Main Falls. Return to your hotel to relax on the terrace and enjoy lunch. Depart in the late afternoon for your Bushtracks Express vintage train dinner. The train will stop on the Victoria Falls bridge for approximately 20 minutes and you will have a chance to disembark from the train to look around. A five-course dinner will be served on the train before heading back to the Victoria Falls Station platform. Return to your hotel for another overnight. *All Meals*



Highlights Days 9-12

Oceana Beach Relaxation Day
Victoria Falls Hotel
Zambezi Grande River Cruise
Jungle Junction Dinner Experience

Victoria Falls Walking Tour
Bushtracks Express Train & Dinner





Daily Itinerary: Days 13-17

13 CHOBE RIVER FRONT

Travel to Botswana and be met by a Zambezi Queen representative who will help with your luggage and transfer to immigration offices. Board the chartered vessel, Zambezi Queen by Mantis, your luxurious and exclusive riverboat that will play host John Hall's Alaska guests for three nights. Enjoy a welcome drink and take in the spectacular scenery, before entering the dining room for a delectable three-course dinner along with an excellent choice of paired wines. Retire to the night sounds of Africa in the distance. *All Meals*

14 CHOBE RIVER FRONT & WATER SAFARI

Mornings are free on this cruise for your choice of activity. Perhaps you want to enjoy a water-based safari, a village tour on the Namibian side of the river, enjoy bird watching, or go fishing. You may even decide to simply remain on board as the luxurious Zambezi Queen glides its way along the banks of Chobe River. After your morning activities, enjoy lunch on board while using your unique vantage point to spot wild animals and take in the expansive views. Join your ship's guide in the afternoon for a water-based safari on a tender boat where you can get up close to an array of wildlife, including some of the 120,000 elephants for which the Chobe is well known. After a delicious dinner, settle down for a restful night. *All Meals*

15 CHOBE RIVER ADVENTURE DAY

After a hearty breakfast, head off to experience those activities you didn't manage to fit in yesterday: enjoy a water-based river safari by tender boat, go bird watching or go fishing for tiger or bream. Return for lunch on board and some relaxation time before the afternoon activities start. Again, you have the choice between tiger or bream fishing, game viewing by tender boat or bird watching. In the evening, you're in for a treat. Enjoy our traditional African dinner, served with festive African singing and dancing. You can even join in the festivities if you feel like it! *All Meals*

16 JOHANNESBURG

Enjoy a morning cruise during breakfast as you do your last bit of animal spotting. Bid your crew farewell and then board a 2 hour flight from Kasane to Johannesburg. Upon arrival you will be met and transferred to your hotel, the Intercontinental. Have a wonderful farewell dinner here and then relax for the evening. *All Meals*

17 FLY HOME

Enjoy breakfast and then transfer to the Johannesburg International Airport to board your flight bound for home. *Breakfast*



Highlights Days 13-17

Privately Chartered, 3 Night Zambezi Queen River Cruise
Chobe Water-Based Safari
Zambezi Queen Adventure Day Activities - Fishing, Birding, Wildlife Safari

Helpful Travel Information...

More About The Regions That You Will Visit

SOUTH AFRICA - One of the most culturally and geographically diverse places on earth, South Africa boasts 11 official languages and its inhabitants are influenced by a fascinating mix of cultures. Above all else, its untamed wilderness is astonishing with wildlife that roams freely across massive unfenced game reserves.

ZIMBABWE - A nation of spectacular natural beauty, friendly people and rich culture. Victoria Falls – known to locals as ‘The Smoke That Thunders’ – is one of the seven natural wonders of the world and the sheer power of this massive body of water plunging into the Zambezi Gorge is awe-inspiring and unforgettable.

BOTSWANA - Situated in the southern reaches of Africa, Botswana is renowned for its pristine wilderness areas characterized by deep lagoons, wetlands, lush palms, rugged hills and desert plains scattered with scrubland. These natural wonders provide a tranquil haven for an abundance of African wildlife to thrive.

Mobility & Dietary Restrictions

This tour will require the ability to walk an easy mile and sometimes on uneven paths. Regularly getting in and out of vehicles. Please be aware of these requirements before joining the tour. This tour is not recommended for those requiring the use of a mobility device that may include a wheelchair, scooter or walker.

Salt-free, kosher, food allergies, or any other special dietary meals must be requested at the time of booking and we will do everything we can to honor your request. Please reconfirm your meal selection with your waiter at each dining location.

Flights

Arrival and departure airfare is not included. Flights should be booked to arrive anytime on day 1 into Cape Town and fly home at any time of day on day 17 from Johannesburg. John Hall's Alaska has guaranteed late check out for anyone who has a late departure on day 17. Due to TSA security checks, please arrive at your local airport 2 hours prior to the plane departure time. The John Hall's Alaska team can provide assistance with flight arrangements.

It is important to note when booking flights, international airports may require additional security screening when transiting terminals. Guests should plan for 2-3 hours in between international flights.

All flights during package will be included in travel cost. Air travel is commercial carriers and requires following international travel guidelines. Airline luggage allowance varies depending on carrier.

Suggested Packing List

Luggage will be limited to one large bag per person with a weight limit of 44 pounds, plus a carry on. At times, access to your luggage may be limited during travel. We suggest you pack efficiently! Always bring a hat, sunglasses and sunblock as the sun can be strong even in the fall months. Walking shoes are a must. For game viewing, a couple of neutral-toned items will be useful, but there's no need to go overboard. For the evening, if you are dining at an upmarket restaurant smart-casual attire is recommended, otherwise dress is casual.

Climate and Weather

February is considered the summer time in South Africa. Temperatures will be in the 70's and 80's during the day with lows in the 60's once evening arrives. Prepare for both sun and rain during your time with us.

Internet Access

All accommodations will have access to wi-fi and internet with the exception of your three night stay aboard the Zambezi Queen riverboat which is equipped with a satellite phone for emergency use.

Helpful Travel Information...

Proud Members Of:



Making A Reservation

To confirm your reservation, please send a deposit of \$1,500.00 USD per person within ten days of your reservation. To reserve your space by credit card, please contact our office: 800.325.2270. Mastercard, Visa, Discover, American Express and personal checks are acceptable forms of deposit payment.

A discount of \$300 USD per person will be extended for those paying their tour balance by cash or check.

Final Tour Payments

There are no monies due between the deposit and the final payment. Final payment must reach John Hall's Alaska 120 days prior to tour departure date. If payment is not received on time, space may be released. Re-booking will be subject to availability. Guests will be charged \$35 USD per check that is submitted with insufficient funds. We will send final payment reminders to you two weeks before the due date.

Travel Insurance is required for this trip. Please take out travel insurance before making your final payment.

Tour Cancellation

If a cancellation is made in writing at least 120 days prior to departure, a full refund will be made, **minus a 4% fee on any monies originally paid by credit card**. For cancellations made less than 120 days prior to departure, the following per person charges apply:

60-120 day: 50% of total charges Inside 60 days: 100% of fare

Visa & Passport Requirements

At this time visas are only required for travel in Zimbabwe. John Hall's Alaska will take care of acquiring guest visas. Passports must be valid for 6 months following the return date of your tour. In addition, each guest will need 2 blank consecutive/side by side pages per country visited - which is three countries.

