



John Hall's ALASKA

## 2025 GALAPAGOS BEACHES & BAYS

Chartered small ship experience in Galapagos!





# 2025 GALAPAGOS BEACHES & BAYS

## WHY THE GALAPAGOS ISLANDS?

Back by popular demand with some of the highest reviews from our previous JHA World Adventure enthusiasts - the Galapagos Islands! While the islands contain similar characteristics to Alaska adventures, there are also significant differences including temperature, wildlife and variety of islands.

Endemism - many species are found here that are found nowhere else. It is estimated that 26 endemic species of birds and other unique creatures have made their homes in the Galapagos, including Giant Tortoises, Marine Iguanas, Darwin's Finches and Booby birds. The islands are virtually unchanged, pristine and natural environments. Ninety-seven percent of the islands are designated a national park with little human impact, a destination unlike anywhere else in the world. The Galapagos Islands are also part of a huge Marine Reserve, which ranks among the highest in the world.

The Galapagos Islands are an inspiration for modern thinking and historical research. The unique wildlife found here inspired Charles Darwin's revolutionary theory of evolution.

## 2025 ROUTE MAP



### TRAVELING THE WORLD SINCE 1983

Ultimate small group travel focusing on the right way to see the world - premium experiences to bucket list destinations for over 40 years! See the world the John Hall way!

### WHAT OUR GUESTS FROM 2021 ARE SAYING:



"Words can not do our trip to the Galapagos Islands justice. You have to experience it for yourself. Each island is unique with different animals and vegetation. Each day was a new adventure and the local guides were exceptional. You will not be disappointed with this JHA World Adventure!"

- Larry & Betty J.



"Traveling to the Galapagos Islands provided the opportunity for us to immerse ourselves in nature and experience the cultures close up. I can say we did not have one boring moment, and it was the experience of a lifetime. It fills our hearts to truly be involved in our adventures."

- Lee & Linda S.

# 2025 GALAPAGOS BEACHES & BAYS



## 10 DAYS, 9 NIGHTS OF EXPLORATION IN ECUADOR & THE GALAPAGOS

Spend 2 nights in the historic city of Quito before embarking on an unforgettable 8-day voyage to the breathtaking Galapagos islands. Sail through the pristine waters and witness exotic wildlife aboard the privately chartered John Hall's Alaska World Adventure vessel.



## HIGHLIGHTS & OVERVIEW

### ENRICHMENT ON ECUADOR

- Local touring and history highlights
- Welcome with fellow travelers
- All meals
- 2 nights accommodations

### EXPLORE THE GALAPAGOS WONDERS

- 7 nights onboard a private luxury John Hall's Alaska chartered vessel
- 20 fellow John Hall's Alaska passengers
- All meals, beverages (see page 7), Galapagos flights and crew gratuities
- Local naturalists, guides, and a variety of species only found in Galapagos

## EVOLVE VESSEL

### SHIP HIGHLIGHTS

- New in 2023
- Sustainable Hybrid Technology
- 142 feet long
- 20 passenger capacity with 13 crew members
- Sauna, spa and relaxation

## 2025 DEPARTURE & PRICING

### TOUR

GL5-1114

### DATE

NOVEMBER 14 - 23, 2025

**SINGLE**  
OCCUPANCY  
**\$19,619**

**DOUBLE**  
OCCUPANCY  
**\$13,849**

### Deluxe Suite Cabins

**Group Size:** 20 Passenger Maximum

**Per Person Price Includes:** Requested type of accommodations onboard vessel, fully-guided service, airport meet and greet, attractions, all meals, taxes, baggage handling, flights between San Cristobal and Galapagos, all service gratuities and cruiseline gratuity/fees. Also includes 2 nights of accommodations, meals and touring in Quito, Ecuador.

**Active Rating:** This tour requires guests to board small vessels and walking on rocks, sand or other uneven surfaces. Light mobility is required. A variety of activity options will be available onboard to ensure most mobility needs are able to be met.

**Flights:** Guests may arrive anytime on November 14th. Should guests wish to arrive early, John Hall's Alaska will assist in additional nights pre/post Galapagos adventure. Group flights are included in the package cost from Quito to San Cristobal and returning San Cristobal to Quito. Guests may book flights departing Quito, Ecuador after 8pm on November 23rd.



# 2025 GALAPAGOS BEACHES & BAYS

## ITINERARY OVERVIEW:

*\*\*Subject to change prior or during cruise experience, based on Captain's discretion*

**FRIDAY, NOVEMBER 14** - Arrive in Quito, Ecuador

**SATURDAY, NOVEMBER 15** - Group welcome & touring

**SUNDAY, NOVEMBER 16** - Fly to San Cristobal

**MONDAY, NOVEMBER 17** - Punta Pitt & Cerro Brujo

**TUESDAY, NOVEMBER 18** Punta Suarez, Osborn Inlet, Gardner Bay & Inlet

**WEDNESDAY, NOVEMBER 19** - Punta Cormorant, Post Office Bay, Puerto Ayora

**THURSDAY, NOVEMBER 20** - Puerto Ayora & Charles Darwin Research Station

**FRIDAY, NOVEMBER 21** - Sombrero Chino, Black Turtle Cove, Bartolome

**SATURDAY, NOVEMBER 22** - South Plaza Island, North Seymour

**SUNDAY, NOVEMBER 23** - San Cristobal & return to Quito

## 2025 GALAPAGOS BEACHES & BAYS ITINERARY:

### 1 WELCOME TO QUITO

Welcome to South America, Ecuador and the beautiful city of Quito. Your John Hall's Alaska representative is on site to provide a warm welcome as you depart Ecuador customs. Transfer to your hotel and home for the next two evenings.

*Dinner*

### 2 QUITO AND HISTORIC ECUADOR

Enjoy a welcome breakfast with your fellow John Hall's Alaska World Adventure Travelers. We may be miles from Alaska or other destinations traveled, but this adventure starts with the same personalized service. Spend today enjoying the historic sites of Quito on an included city tour with lunch. Return to your hotel for dinner at leisure.

*Breakfast, Lunch, Dinner*

### 3 BOARD YOUR VESSEL

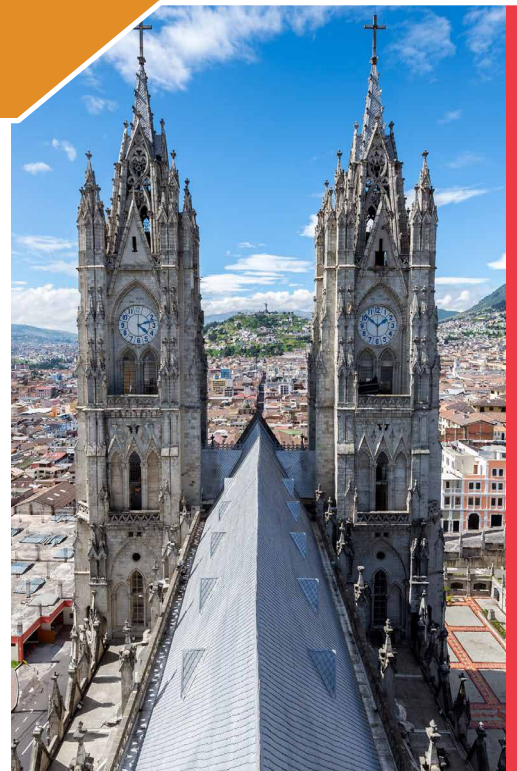
Today, the Galapagos bucket list adventure begins. Board an early morning commercial flight to San Cristobal Island, where the vessel guides will be waiting for the John Hall's Alaska World Adventure group. After a short bus ride to the dock, take a Zodiac to the yacht for your welcome experience. Adventure opportunities start right away. This evening, join the Captain, Crew and your fellow travelers for a welcome reception and dinner.

*Breakfast, Lunch, Dinner*

### 4 CERRO BRUJO & PUNTA PITT

Your first day of exploration starts with a zodiac ride to look for wildlife on Cerro Brujo with your guide pointing out a variety of wildlife. Enjoy a peaceful walk on the beach, swim with sea lions, paddleboard or kayak. The opportunity to snorkel may even present itself. Throughout the duration of the cruise, the Captain will use discretion based on weather and wildlife.

*Breakfast, Lunch, Dinner*





# 2025 GALAPAGOS BEACHES & BAYS

## 5 PUNTA SUAREZ & GARDNER BAY

This morning, enjoy landing on Punta Suarez, Espanola Island. This island is home to several unique bird species, lava rocks and several ancient looking iguanas. Return to the yacht for lunch before continuing to an afternoon snorkel followed by a landing on Gardner Bay, site of an expansive white-powder sand beach where colonies of sea lions are known to dot the shorelines. Spend the remainder of the afternoon snorkeling, kayaking or paddleboarding among the wildlife.

*Breakfast, Lunch, Dinner*

## 6 PUNTA CORMORANT & POST OFFICE BAY

Step ashore at Punta Cormorant's olive-sand beach with the sounds of sea lions, lava herons, yellow-crowned night herons and blue-footed boobies as you explore Floreana Island. As you walk the island and lagoon, your guides will point out several species and unique heritage of the islands. Follow the trail to a beach where sea turtles lay their eggs in the sand dunes and stingrays swim in the shallow water. Spend the afternoon visiting one of the Galapagos best traditions, Post Office Bay. Take a Zodiac to Baroness Point to find sea turtles, rays and several colored fish.

*Breakfast, Lunch, Dinner*

## 7 PUERTO AYORA & CHARLES DARWIN RESEARCH STATION

Wake today with a completely different view from the last few days. A harbor full of boats is bustling with activity in Puerto Ayora, Santa Cruz Island and a town of 24,000 people. Travel by bus to a higher altitude and enjoy a ranch where tortoises roam free. Following lunch on the yacht, experience the most famous visitor location in all of the Galapagos - Charles Darwin Research Center. Have free time to explore in town before returning to the yacht.

*Breakfast, Lunch, Dinner*

## 8 GALAPAGOS ISLANDS EXPLORATION

Return to the quiet notes of the Galapagos as you wake this morning, with no other boats in sight. This morning, choose from either a hike around Bartolome Island or a Zodiac looking for penguins. Return to the vessel for lunch before spending an afternoon exploring the rich wildlife of the Galapagos Islands.

*Breakfast, Lunch, Dinner*

## 9 SOUTH PLAZA & NORTH SEYMOUR ISLAND

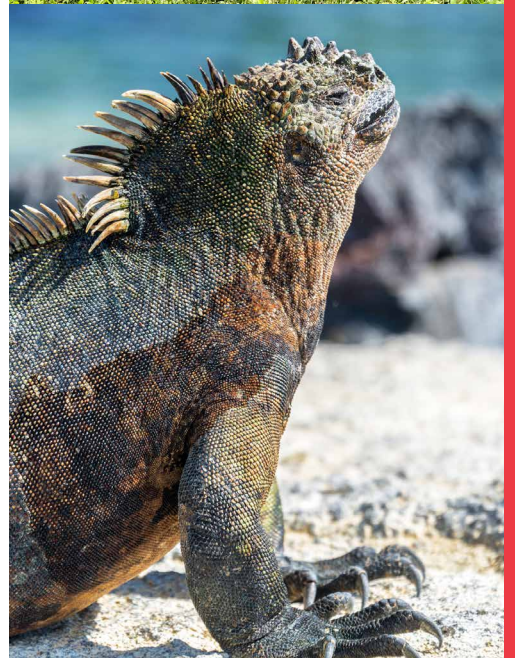
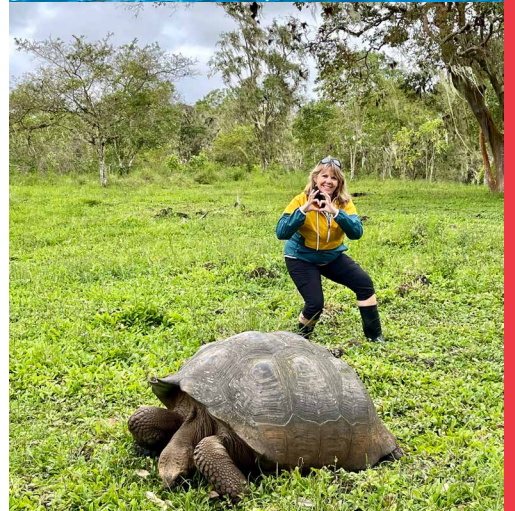
This morning, visit South Plaza, a small islet with tall cliffs and a trail with a variety of plants and animals. During lunch sail towards North Seymour Island where a spectacular sight awaits: frigate birds with red sacs on their chests inflated, seeking mates. The Galapagos Islands are home to two amazing species. This evening, enjoy a farewell dinner with your Captain, Crew and fellow travelers remembering all the incredible memories from the last week.

*Breakfast, Lunch, Dinner*

## 10 RETURN TO QUITO

This morning, disembark the yacht after breakfast, visiting the Interpretation Center before heading to the airport. Catch the group flight back to Ecuador and continue traveling home. Guest flights may depart Quito, Ecuador anytime after 8pm.

*Breakfast*



# EVOLVE VESSEL

## SAIL IN LUXURY

All staterooms feature full-length panoramic windows to enjoy the expansive ocean and island views, while feeling pampered with luxury amenities.



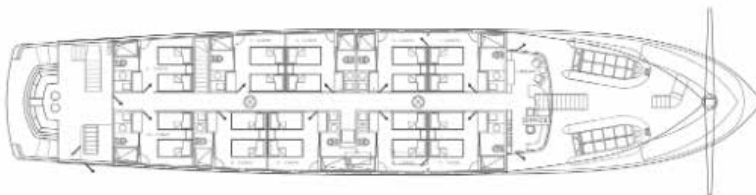
### LONGITUDINAL VIEW



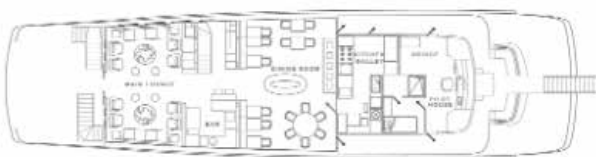
### FINCH DECK



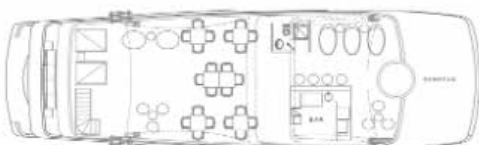
### BEAGLE DECK



### DARWIN DECK



### SUNDECK



## DELUXE SUITE CABINS

- Generous space of 145 square feet
- Panoramic windows that open up to breathtaking views of the ocean
- Private bathroom
- All staterooms are strategically located on the main (Beagle) deck





# 2025 GALAPAGOS BEACHES & BAYS

## Worry-Free, Small Group Travel

### Expert Naturalist Guides - At Your Service

All packages are fully-guided by individuals who understand and are experts in the field, history and ecological regions visited. The two onboard naturalists are selected to act with extensive knowledge and will share information during lectures including marine biology and history. These same guides will travel with you during landings, hikes and boat cruising. All tours also include a John Hall's Alaska representative to ensure all John Hall's Alaska standards are met throughout the program.

### Activities in Galapagos

John Hall's Alaska has partnered with Ecoventura to provide the most unique and hands on Galapagos experience available. Twice-daily guided shore excursions will take place each day with naturalists and are based on guests' experience. Options will include swimming, snorkeling, kayaking, paddle-boarding and exploration of waters/beaches by Zodiac.

Guests will have access to multiple double and single kayaks, stand up paddle-boards, wet suits and snorkeling gear including masks, fins, snorkels and beach towels.

### Dining Style & Gastronomy

All meals are included while traveling with John Hall's Alaska World Adventures to Galapagos. All meals are freshly prepared and locally sourced from farms and producers on the islands. Local fruits, vegetables and of course fish, are main staples in the chef's menus. While the vessel specializes in seafood, a variety of options will be available for guests. Please let us know at the time of booking if there are any food allergies or intolerances.

### Beverages

Complimentary beverages provided at breakfast, lunch and dinner will include unlimited water, coffee, iced tea and lemonade. Soda, juice, house wine, local beer, and a variety of spirits are included with the Open Bar Policy.

\*\*Premium wine and spirits are available for an additional charge.

### Baggage Handling, Tax and Gratuities

Don't lift a finger! We take care of all luggage, delivering it to the guest's room each evening and picking it up for departure. All entrance fees, hotel charges, taxes, fees and resort fees are included. In addition, gratuities for activities, meals, baggage handling, local guides, drivers, and crew are also included.

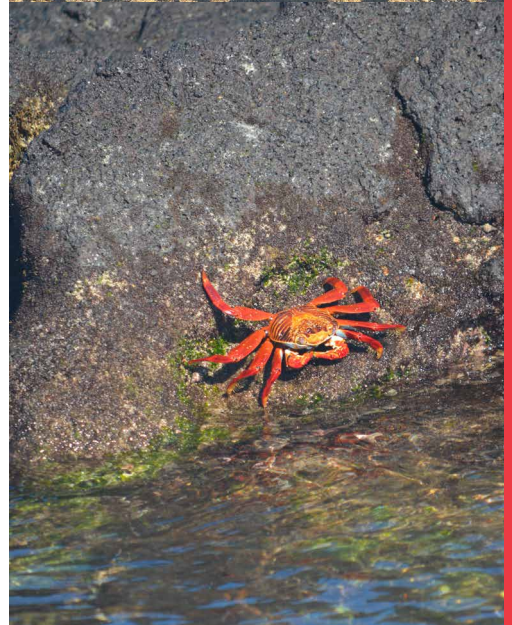
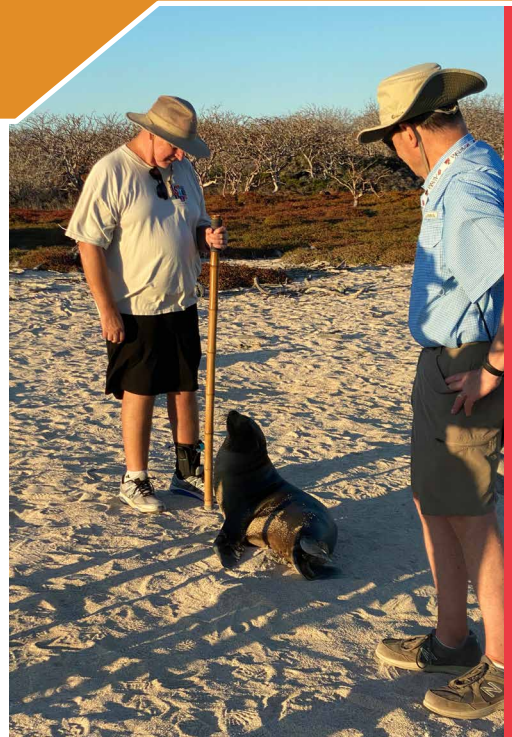
\*\*Gratuity for your John Hall's Alaska representative is not included with your package and is at your discretion. We recommend \$20-30 per person, for the entire duration of the trip.

### Sustainability & Conservation Efforts

While traveling the Galapagos, we have chosen partners who value Galapagos nature, wildlife and take extreme measures to protect this amazing environment.

### Extra Onboard Activities

- Satellite communication and Wi-Fi are available onboard for an additional charge
- Premium wine and cocktails
- Laundry service



# IMPORTANT DETAILS

## How to Book

To confirm your reservation, a deposit of **\$3500.00 USD per person** is due within 10 days of reservation. To reserve your space, please contact our office at 800.325.2270. Guests may also book online by visiting our World Adventure page at [www.KissAlaska.com](http://www.KissAlaska.com). Deposits are accepted by check or credit card including Visa, Mastercard, Discover and American Express.

**\*\*A discount of \$300 USD per person will be extended for those paying their tour balance by cash or check. Deposit may still be made by credit card, however will be subject to a 4% fee if cancelled outside 180 days.**

## Final Payment

Final payment is due 180 days prior to departure date. If payment is not received in time, space may be released. Additional monies are not due between deposit and final payment. Guests will be charged a \$35 USD per check that is submitted with insufficient funds.

## Tour Cancellation

If a cancellation is made in writing at least 180 days in advance of departure, a full refund will be made, less a 4% fee on any monies paid by credit card.

For cancellations inside 180 days, the following penalties will be incurred:

90-180 Days - 50% of paid fare

61-89 Days - 75% of paid fare

Inside 60 days - 100% of paid fare

**\*\*Cancellation penalties and deposit policies follow all partner requirements, policies and penalties.**

## Trip Insurance

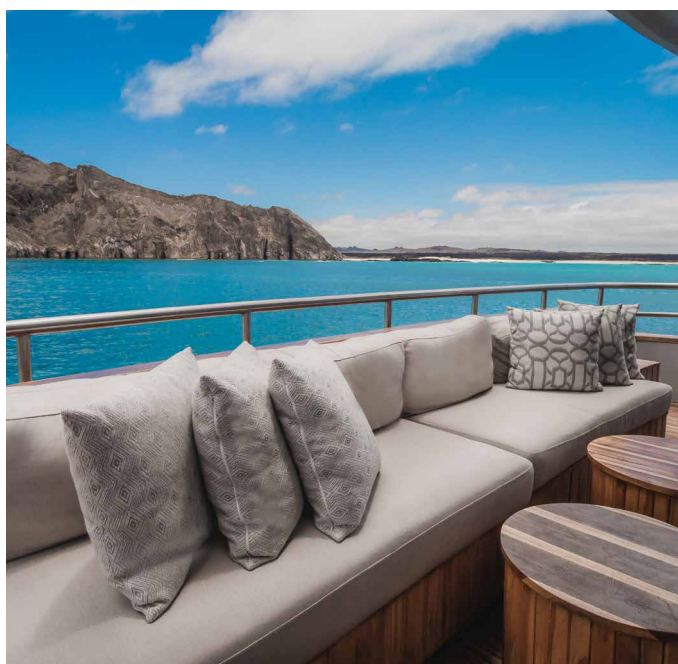
John Hall's Alaska partners with Travel Insured to supply guests with trip insurance. Guests should purchase this prior to making final payment. Details and pricing will be included with initial invoices, final payment reminders and can be found by visiting [www.KissAlaska.com](http://www.KissAlaska.com). We highly recommend travel insurance for all guests.

**\*\*If you intend to take out trip insurance to cancel for any reason, this must be done immediately upon securing your reservation.**

## Suggested Packing

The dress code is 100% casual while traveling in the Galapagos and onboard the Evolve vessel. You can expect temperatures to range from 50-90 degrees depending on the locations, activities and elevation. Clothing that can be easily layered is best to pack. Ecoventura vessels will provide towels, bathroom amenities and other personal items for your use while onboard. Reusable bottled water will also be available while onboard.

Our recommendation to pack includes, but not limited to: rain jacket and umbrella, sunglasses with UV lenses, good shoes for walking on shore, swimsuit, sunscreen, other sun protection such as hat, shorts, casual sandals and other sun attire. We recommend bringing one-two pairs of smart casual attire for dinners in Ecuador including slacks, golf polos or sundresses.





# IMPORTANT DETAILS

## Dietary Restrictions

Salt free, kosher, food allergies, gluten free or any other special dietary meals must be requested in advance. Please advise this at the time of booking. **Due to the very remote and limited nature of the Galapagos, John Hall's Alaska MUST know any health accommodation requests in advance.**

**\*\*Please make our reservation team aware of any other accommodations we can assist with during the booking process.**

## Luggage Handling

All gratuities for luggage handling are included with your John Hall's Alaska package. One piece of luggage per guest will be delivered to your room at each property while traveling between Ecuador, the hotel, airlines and vessel. Local airline requirements allow one suitcase under 50 pounds. Carry-on luggage should be manageable and fit in the overhead of storage compartments on airplanes and motorcoaches, keeping in mind several of these are smaller than your traditional airline overheads. Carry on luggage should not exceed 18 inches for its largest dimension.

## Cell Phones and Wi-Fi

Wireless internet is available for an additional charge however may be limited during remote locations or when satellite connections are limited. Cell phones may also be required to be turned to airplane mode when in National Parks, however Expedition Guides will advise when this is required.

## Tour Documents

Tour documents, including detailed itinerary, luggage tags and passenger list will be mailed approximately 14-21 days prior. This may be delayed if payment is not received on time.

## Extended Stays & Additional Overnights

Should you wish to spend more time exploring Quito, Ecuador by arriving early or extending your trip, John Hall's Alaska will assist in making these arrangements.

## Itinerary Revisions

John Hall's Alaska reserves the right to revise the services included in the itinerary such as hotel accommodations, attractions or port visits. Should this happen, an equal or greater valued experience will replace that included in the itinerary.

## Travel Waiver

According to all vessel standards, guests will be required to sign and acknowledge tour inclusions and vessel operations before final payment deadline.

## Passports

All guests are required to have a passport valid for 6 months post returning home. Please be prepared to supply John Hall's Alaska with your picture page of your passport at the time of booking.

